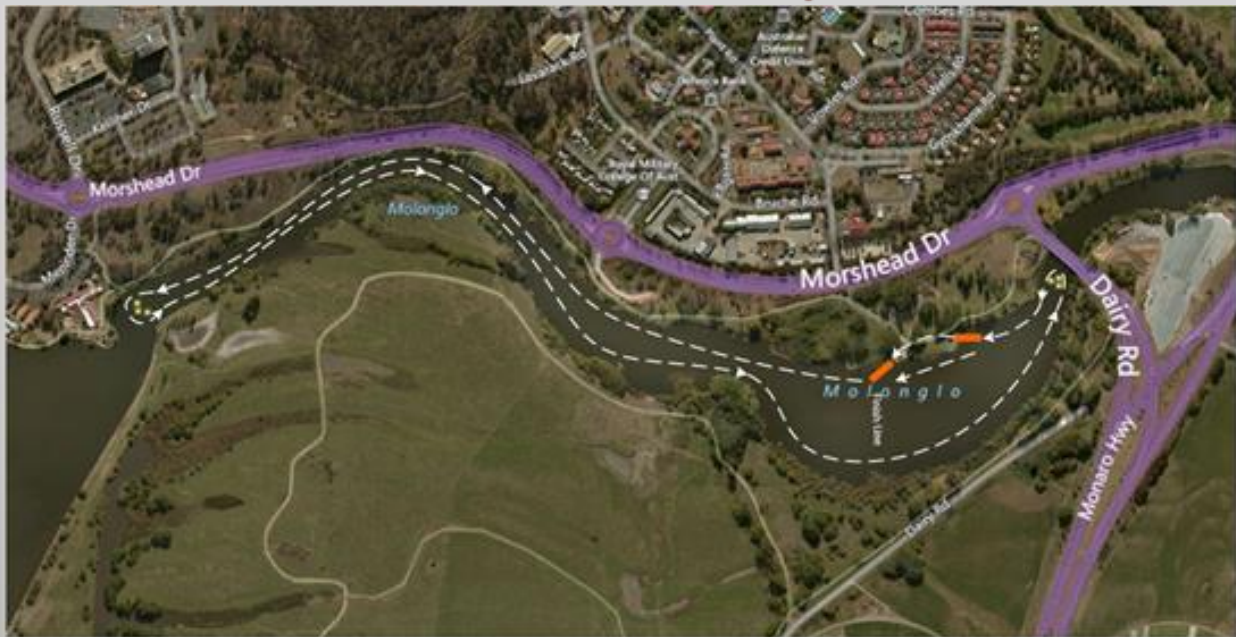




2016 PNSW Canoe Marathon Championships

- DATE:** Saturday 25th February 2017
RACE: in Boat, Age and Gender Classes
HOST: Burley Griffin Canoe Club www.bgcc.org.au
LOCATION: Molonglo Reach, Morshead Drive (opposite Duntroon)*
ENTRIES: On-line: <https://www.regattas.canoe.org.au> Junior, Open + 5 yr age classes
Close on: Wednesday 22nd February **NO ENTRIES ON THE DAY**
REGISTRATION: 8:00 – 9:30 a.m. PNSW Marquee
BRIEFING: 9:30 – 9:45 a.m. PNSW Marquee
START: 10:00 a.m. All Singles: Selection classes; then Rec. Classes
MEDAL PRESENTATIONS: 12:45 p.m.
BRIEFING: 1:30 p.m. PNSW Marquee
START: 1:45 p.m. All Doubles: Selection classes; then Rec. Classes
MEDAL PRESENTATIONS: 4:15 p.m.
COURSES: **3.75 km laps**; Molonglo Reach/Molonglo River

BGCC Marathon 3.75km Lap Overview



* Laps will be counter-clockwise with paddlers staying to the right of the existing marker buoys at all times

- CONTACTS:** Gary Rake rakedover@gmail.com 0419 139 648
Bob Turner bopturner@optusnet.com.au

FOOD STALL in operation for morning and afternoon tea and lunches on both days of racing at Canberra. A goodly selection of cool drinks, tea, coffee, barbecued meats, vegetarian dishes & salads will be available.

* * Paddlers and visitors should note: to gain access to Molonglo Reach. If you are travelling from Canberra City towards the airport, it is necessary to travel an extra 300m to the traffic lights, where U turns are permitted. Make sure you are in the **left lane**, U turn and come back to Molonglo Reach. This won't be an issue if you are travelling on the new Majura Parkway or from Queanbeyan.

41st Burley Griffin Bash

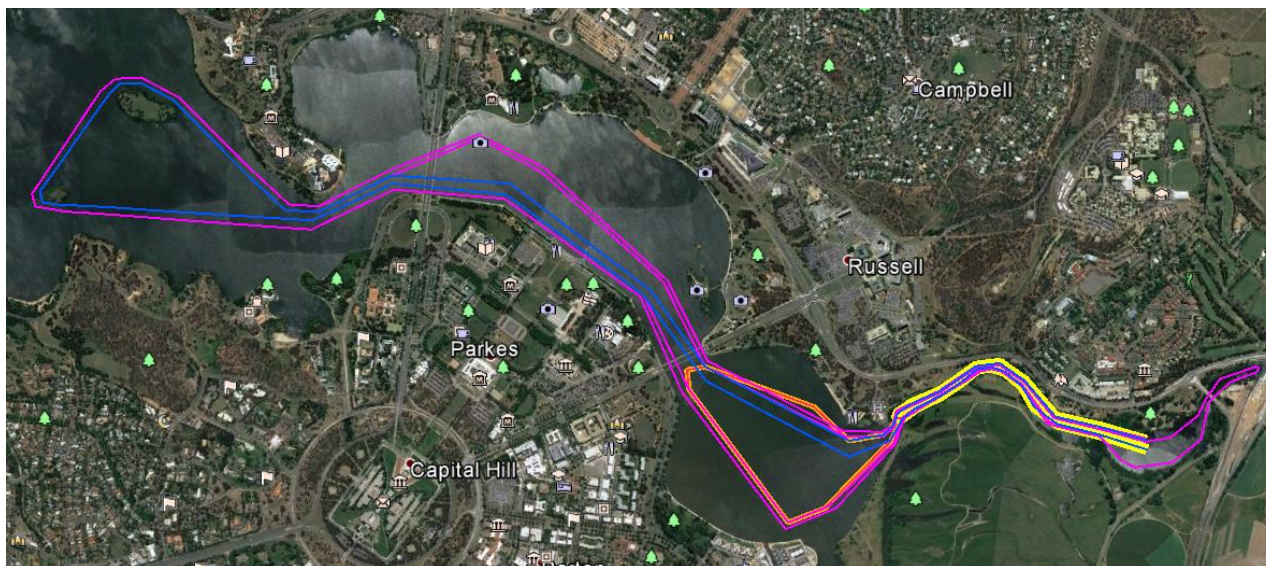


- DATE:** Sunday 26th February 2017
- RACE:** Traditional distances - 30 km & 13 km - class categories
- HOST:** Burley Griffin Canoe Club www.bgcc.org.au
- LOCATION:** Molonglo Reach, Morshead Drive, opposite Duntroon
- ENTRIES:** 7:30 to 8:30 a.m. (On-line pre-entries please.)
- BRIEFING:** 8:30 a.m.
- START:** 9:00 a.m.
- COURSES:** 30 km – Molonglo Reach, around Springbank & Spinnaker Islands in West Lake and return – two laps – return to Molonglo Reach. (Exact course TBA)
- 13 km – Molonglo Reach, the islands in West Lake & return.
- 5 km – Loop to Kings Avenue Bridge & back for Under 14 yrs.
- 3 km – Loop on Molonglo River for Under 12 yrs.

NOTE: *Courses may change if weather conditions are adverse.*

CONTACT: Helen Tongway 0418 861 613 htongway@inet.net.au
Anne Cronin 0418 162 507 annercronin@gmail.com

On-line entries at: <https://www.registernow.com.au/secure/Register.aspx?E=24266>



Don't forget: Perpetual Trophies to be Earned
30 km: Scrivener Trophy and Molonglo Trophy
13 km: Springbank Trophy

The VisitCanberra website provides comprehensive information on caravan parks and camp sites in the Canberra and Queanbeyan region.

<http://visitcanberra.com.au/accommodation/find/caravan-and-camping?ref=site-search>